



INSTRUCTION BULLETIN

No. 340523
Machine: 800 LPG
Published: 1-03
Rev. 00

NOTE: DO NOT DISCARD the Parts List from the Instruction Bulletin. Place the Parts List in the appropriate place in your machine manual for future reference. Retaining the Parts List will make it easier to reorder individual parts and will save you the cost of ordering an entire kit.

NOTE: Numbers in parenthesis () are reference numbers for parts listed in Bill of Materials.

Installation instructions for **kit number 374159**

DESCRIPTION:

This kit contains the parts needed to replace the vaporizer on the model 800 LPG sweeper. Please follow step-by-step instructions.

SPECIAL TOOLS / CONSIDERATIONS: Use plumber's sealant tape to secure all LPG hose threads and fittings.

(Estimated time to complete: 2 hours)

PREPARATION:

(Refer to FIG. 1, 2 and 3)

FOR SAFETY: Before leaving or servicing machine, stop on level surface and set parking brake. Then turn off machine and remove key.

1. Open the engine cover and engine side door.
2. Close the LPG tank valve.
3. Start the machine and let the machine run until the engine stops.
4. Turn the machine power off. Disconnect battery cables from machine.



WARNING: Always disconnect battery cables from machine before working on electrical components.

Old LPG Vaporizer Group Removal:

(Refer to FIG. 1)

1. Locate the LPG vaporizer assembly next to the engine.
2. Remove and discard vacuum hose 34072.
3. Disconnect and remove front heater hose 72979 from water pump outlet and the top of the vaporizer. Set the hose clamps aside.
4. Disconnect side heater hose 72979 from fitting 51839, at the base of the vaporizer. Set the hose clamp aside. Leave the other end connected to the air bleeder tube.
5. Disconnect the end of LPG hose 60725 from fitting 46611, at the base of the vaporizer.
6. Disconnect wire harness from pressure switch 23156. Remove and set aside straight fitting 17414 and pressure switch 23156.

7. Disconnect LPG hose from brass tee fitting 53268.
8. Remove and set aside fuellockoff 73020, vaporizer 374648 and vaporizer mounting bracket 70849 from the machine.
9. Remove fittings 51839 and 46611 from the base of vaporizer 374648. Set fittings aside.

New LPG Vaporizer Group Installation:
(Refer to FIG. 2 and 3)

1. Install vacuum cap (12) on machine carburetor, in place of removed vacuum hose 34072.
2. Locate 90° fitting, connecting LPG hose 60725 to machine carburetor. Rotate fitting 90°, or until it rests horizontal, pointing towards the rear of the machine.
3. Install set aside fittings 51839 and 46611 on the rear side of the new controller (3).
4. Install set aside straight fitting 17414 and pressure switch 23156 in the top, front opening of the new controller (3).
5. Install 90° fitting (7) in the top, rear opening in the new controller (3), opposite the pressure switch 23156.
6. Install straight fitting (10) in the 45° fitting (9). Install the 45° fitting (9), in the middle, front opening of the new controller (3).
7. Install the square head plug fitting (13) in the bottom, front opening of the new controller (3).
8. Install the new mounting bracket (1) to the machine engine with flange nuts (2). Mount the new controller assembly (3) to the mounting bracket (1) with hex screws (4) and washers (5) and (6).

NOTE: Make sure that the controller (3) is mounted with pressure switch 23156 pointing towards the front of the machine.

9. Connect pressure switch to main harness. The 'out of loop' plug connects to lock-out.
10. Connect one end of the new heater hose (11) to the water pump outlet, with a set aside hose clamp. Connect the other end of heater hose (11) to the open straight fitting (10) on the new controller assembly (3).
11. Connect the open end of LPG hose 60725 to 90° fitting 46611 on the rear side of the new controller (3).
12. Connect the open end of heater hose 72979 to 90° fitting 51839 with a set aside hose clamp.
13. Locate old LPG hose that connected old vaporizer group to LPG tank release valve. Replace old LPG hose with new LPG hose (8).
14. Connect one end of LPG hose (8) to tank release valve. Connect the other end of LPG hose to 90° fitting (7), on the rear side of the new controller (3).
15. Check all new LPG hose and fitting connections. Turn LPG tank on, and re-check all connections with a small amount of liquid soap mixed 50/50 with water.
16. Close the engine cover and side door. Start the machine and check the new controller (3) for proper operation.

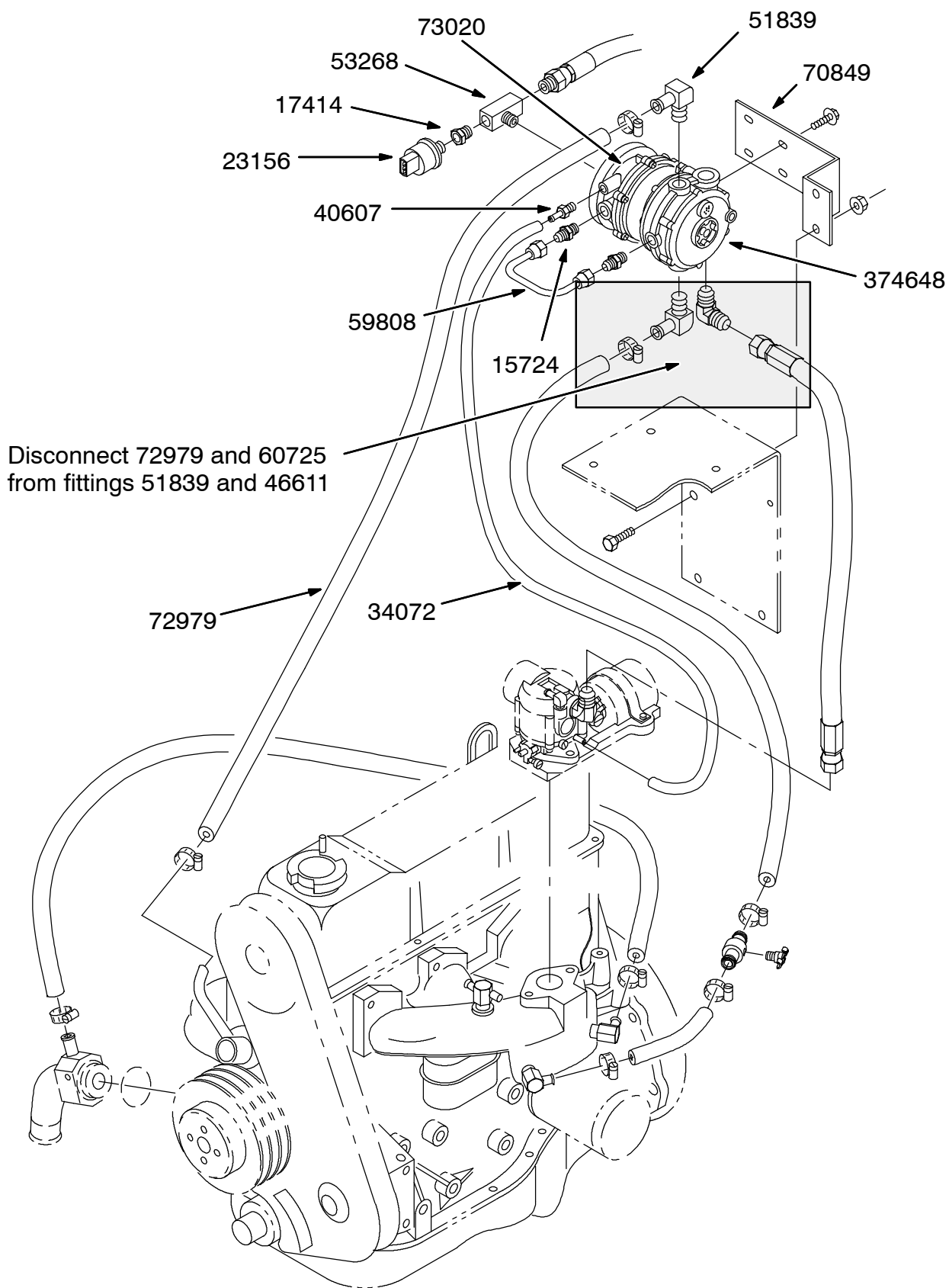


FIG. 1 - Old Vaporizer Group Removal

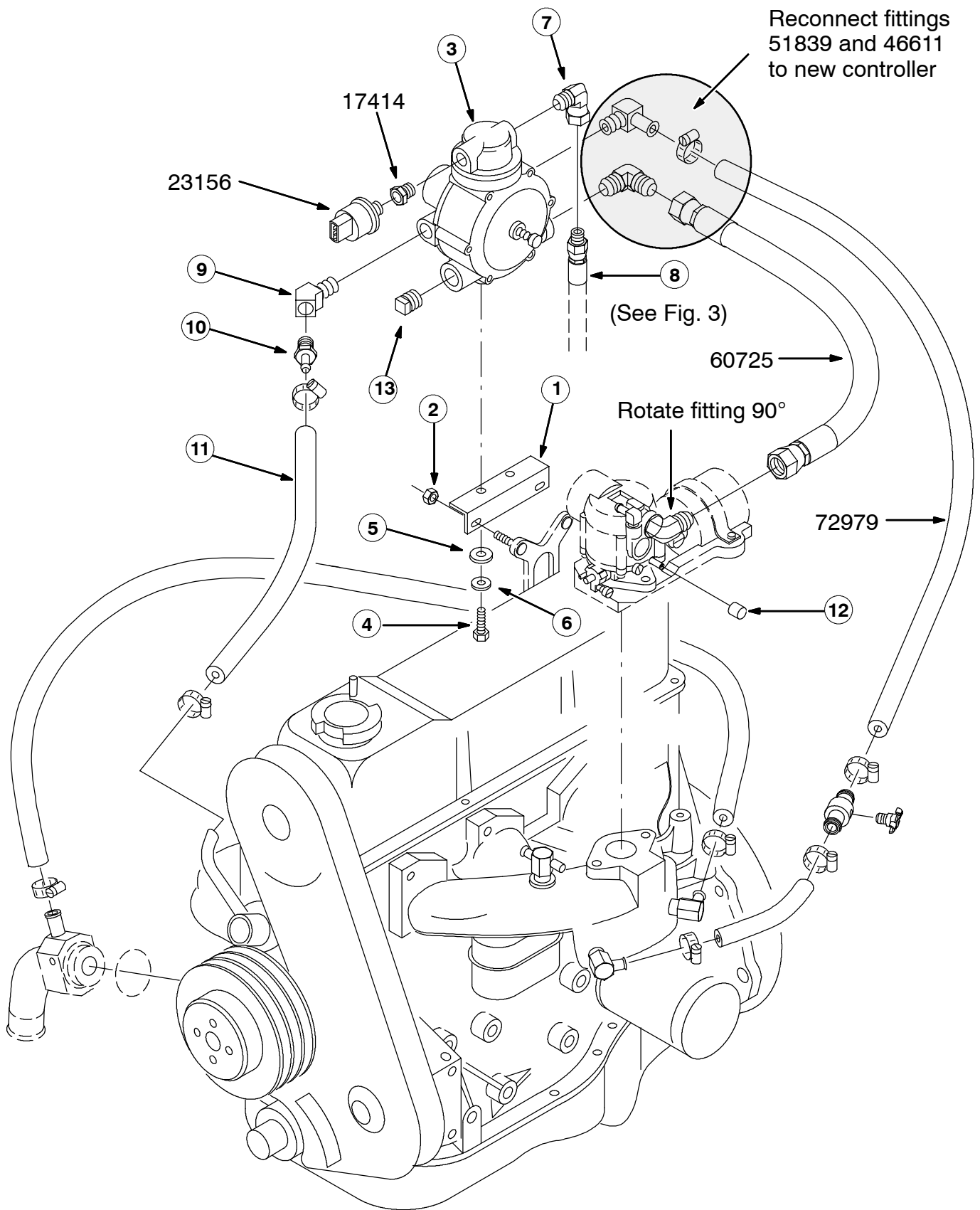


FIG. 2 - New Vaporizer Group Installation

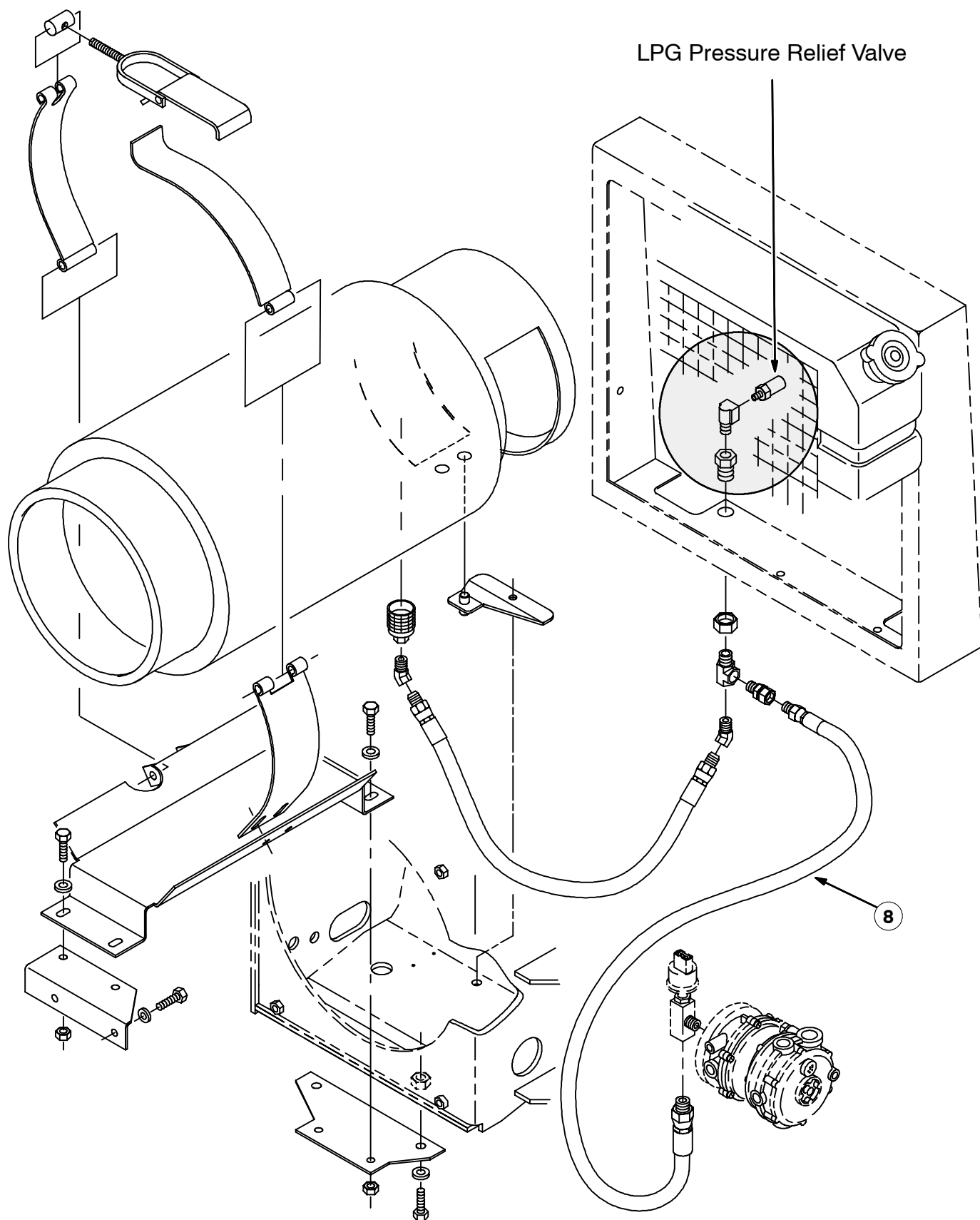


FIG. 3 - New Vaporizer Group Installation (cont.)

BILL OF MATERIALS FOR LPG VAPORIZER KIT 374159

Ref.	TENNANT Part No.	Description	Qty.
1	374154	Angle, mtg, 0.12 X 1 X 1 X 4.5L	1
2	07789	Nut, hex, flng, M05 X 0.8	2
3	383170	Controller, LPG, 12VDC	1
4	06942	Screw, hex, M6 X 1.0 X 16, 8.8	2
5	32483	Washer, flat, 0.25 SAE	2
6	32982	Washer, lock, int, 0.25	2
7	27048	Fitting, brs, E90, PM04/PF04	1
8	374158	Hose, LPG, MED05 PM04STR/PM04STR 46.0L	1
9	01997	Fitting, brs, E45, PM06/PF06	1
10	27767	Fitting, brs, str, EM10/PM06	1
11	60726	Hose, heater, 0.62ID 15.0L	1
12	578723	Cap, vinyl, 0.21ID 0.50L red	1
13	17521	Fitting, pipe, plug, PM08 sq head	1

TENNANT COMPANY
P. O. Box 1452
Minneapolis, MN 55440-1452